

# How to Use a Custom Profile in Corel Draw on Windows

## Step 1: Download and move the profile

1. Download the profile(s) from our website or that were emailed to you from us.
2. Once downloaded, you will need to move the file to the system folder on your computer where all of your profiles are stored. The location will depend on what version of Windows you are running.

**Refer to the list below:**

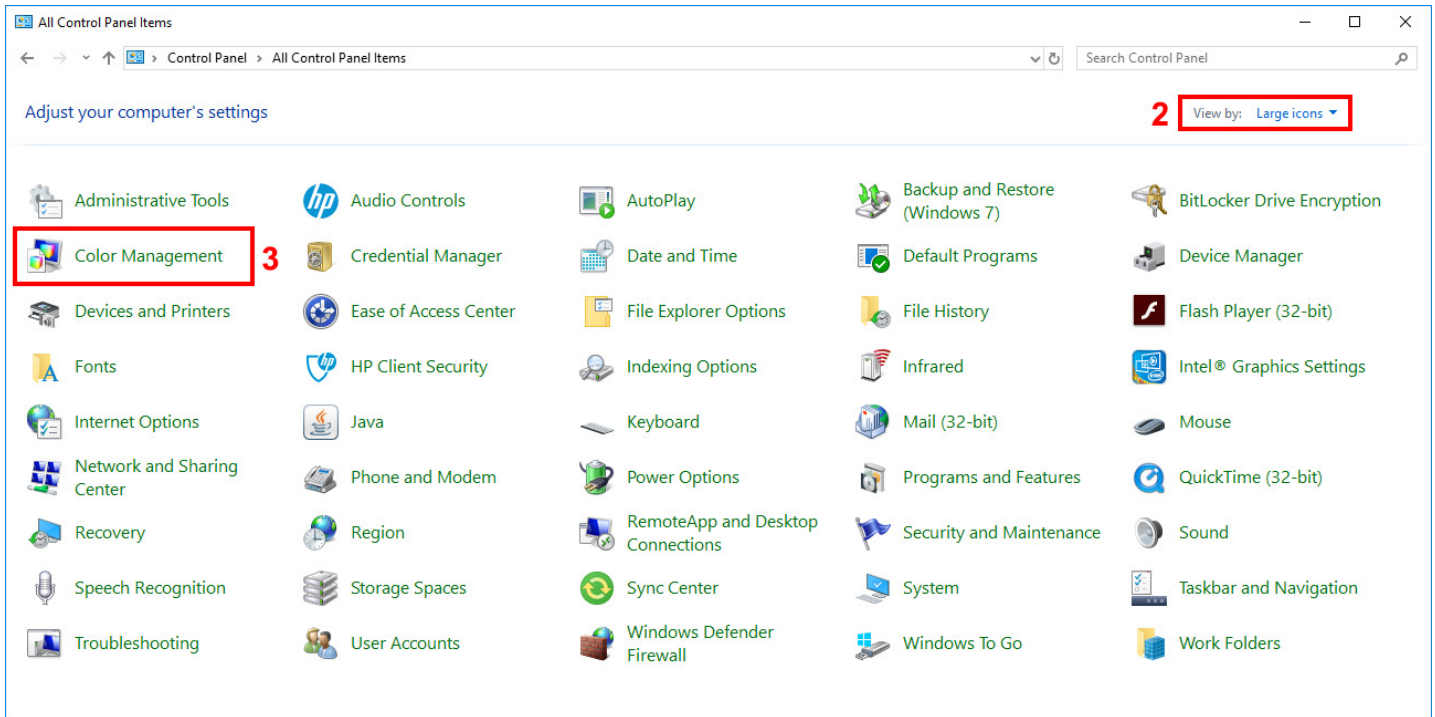
### **Windows 98/ME**

C:\Windows\System\Color\

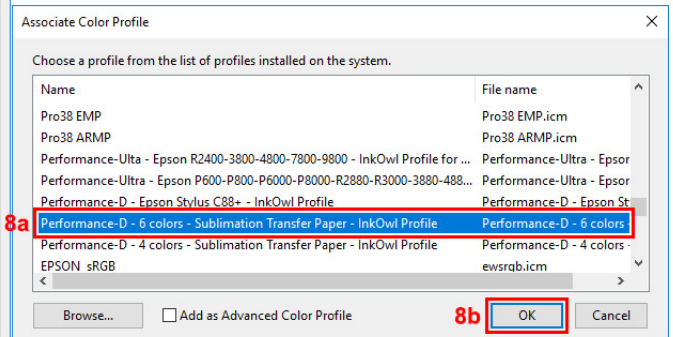
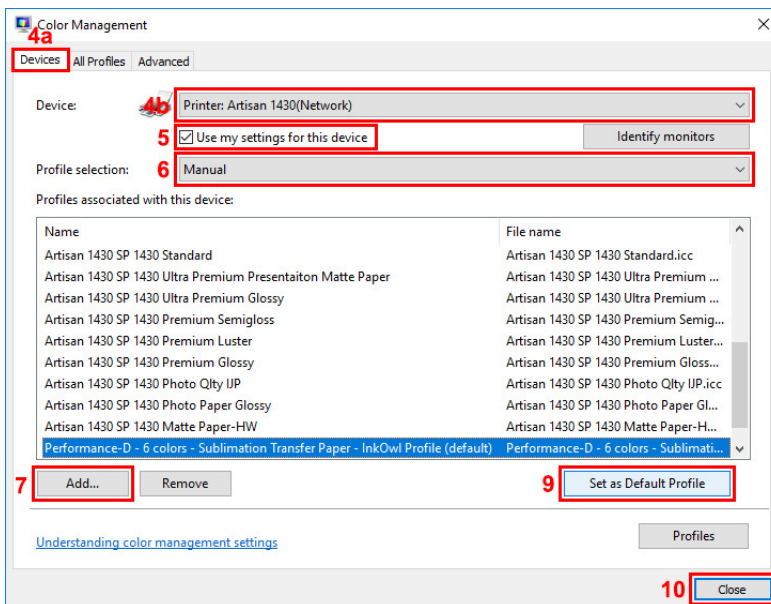
### **Windows XP/Vista/7/8/10**

C:\Windows\System32\Spool\Drivers\Color\

## Step 2: Set up the profile



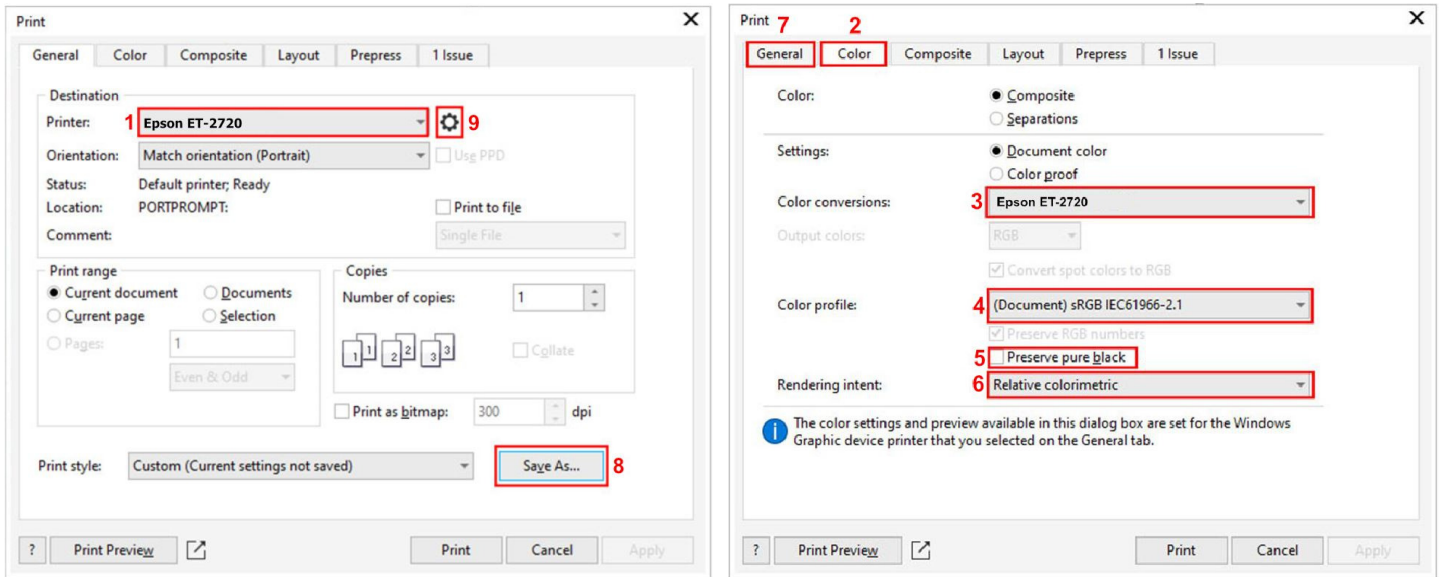
1. Open the Control Panel.
2. Set *View by:* to *Large icons* (if it isn't already set that way) so that the Control Panel looks like the image above.
3. Click on *Color Management*.



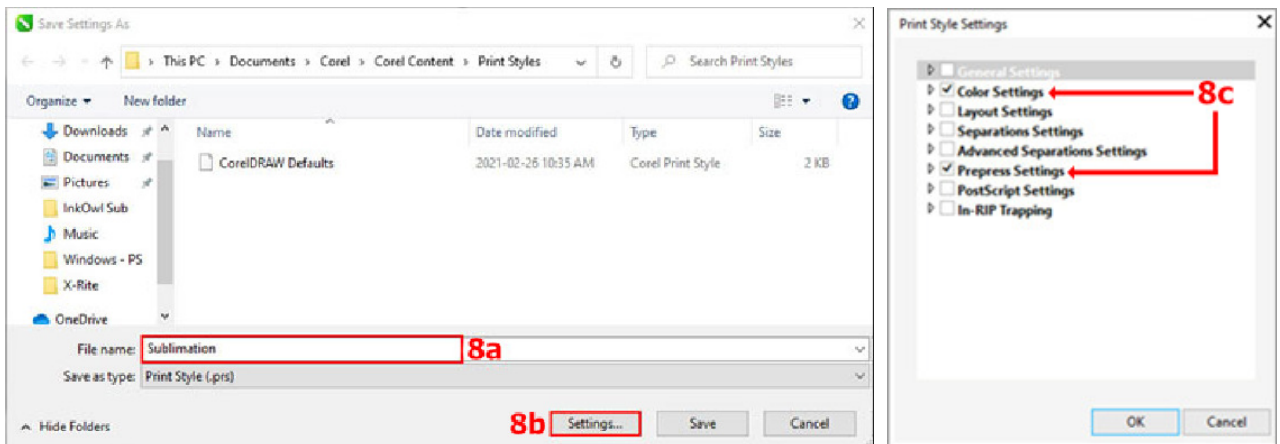
4. Under the *Devices* tab (4a), for *Device* (4b), select your printer from the dropdown menu.
5. Check the box labeled *Use my settings for this device*.
6. For *Profile selection*, choose *Manual*.
7. Click on *Add...*
8. Click on the profile you just downloaded and then click *OK*.
9. Select the added profile then click on *Set as Default Profile*.
10. Click *Close*.

## Step 3: Set up Corel Draw

Press *File* and then *Print* to enter the print dialog window shown below. Please follow the steps listed below:



1. If not already there by default, click the *General* tab and select the correct printer.
2. Select the *Color* tab. **If your version of Corel lacks the Color tab, skip directly to step 9.**
3. Set *Color Conversions* to the printer you are using.
4. Set *Color profile* to the same profile as the document or to an RGB Profile like sRGB IEC61966-2.1.
5. *Preserve pure black* should be unchecked.
6. Set *Rendering Intent* to Relative Colorimetric.
7. Select the *General* tab again.
8. To avoid having to do all this each time you print, we recommend saving these settings as a Print Style by clicking the *Save As...* button:
  - a. Select a name you want the Print Style to have.
  - b. Press *Settings...*
  - c. Check the same boxes as indicated in picture 8c then click OK.

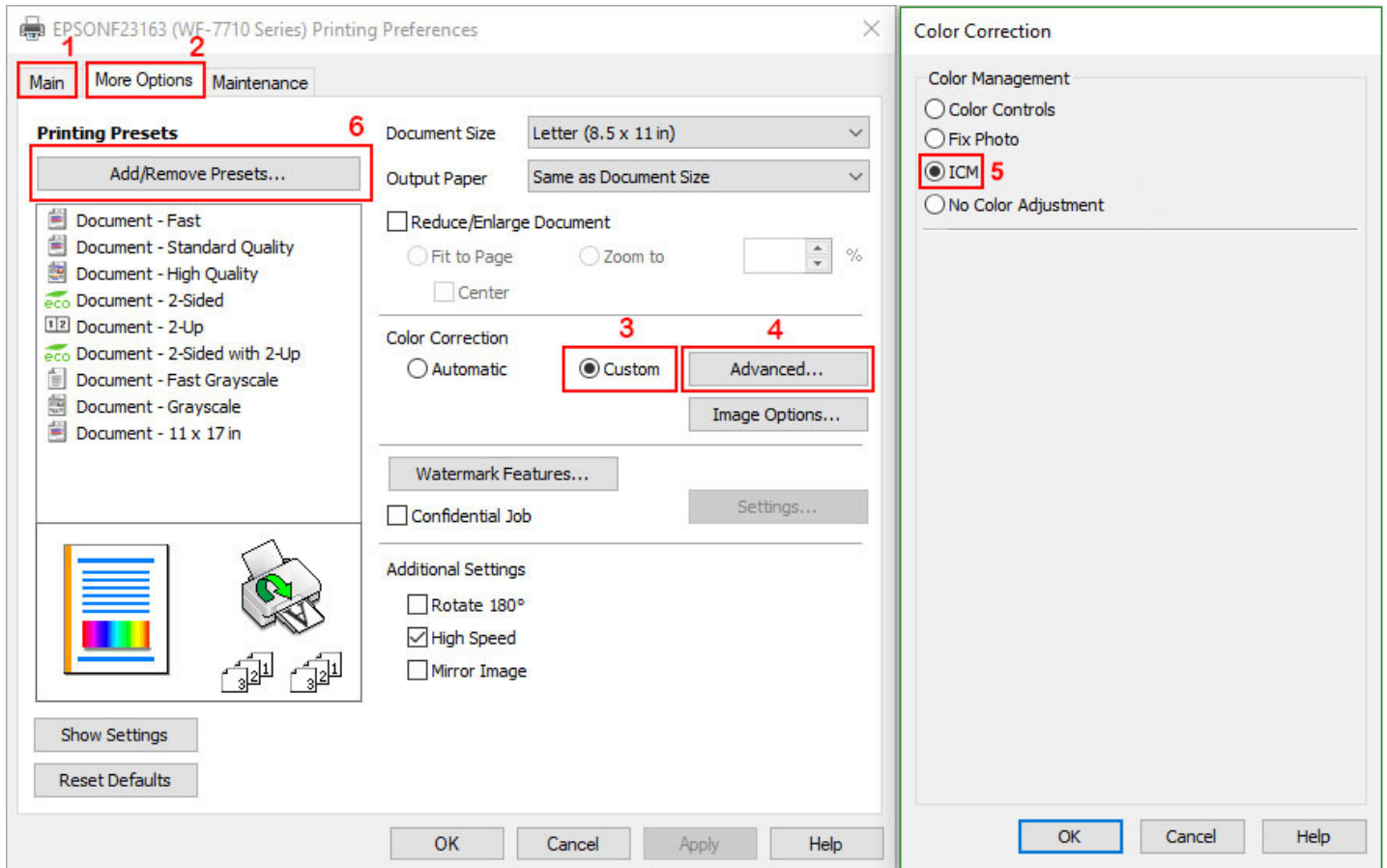


9. Press the Gear symbol next to the printer to complete the driver settings (go to next page).

## Step 4: Set up the driver for ICM mode

This step will vary, depending on the printer that you are using. Here are three common layouts that Epson drivers use:

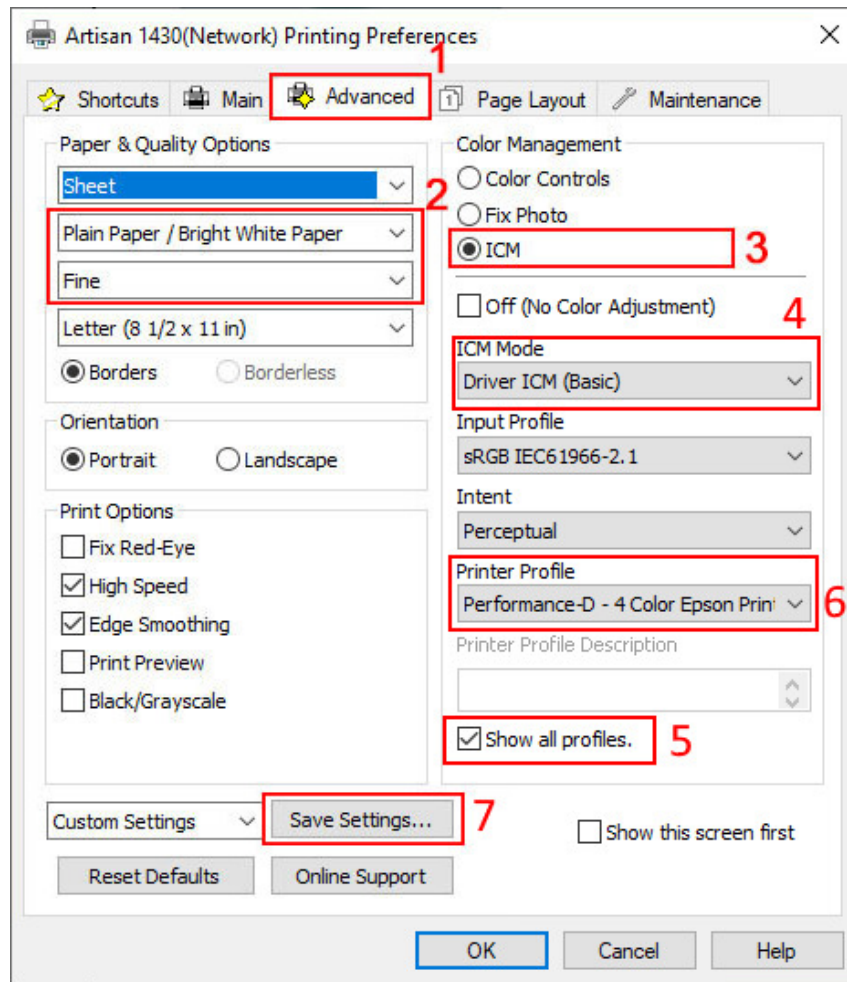
### Version 1



1. On the *Main* tab, select the appropriate media type and quality setting for your print. (For sublimation, we recommend setting the paper type to *Plain Paper* and setting the quality to the highest setting. You will also usually want to print your images mirrored, so you should check the *Mirror Image* box on the next tab.)
2. Select the tab labeled *More Options*.
3. Set *Color Correction* to *Custom* to enable the *Advanced...* button.
4. Click on *Advanced...* to open the *Color Correction* menu.
5. Select *ICM* and press *OK*.
6. To avoid having to do all this each time you print, we recommend saving a Preset. Press the *Add/Remove Presets...* button, give the preset a name, choose an icon and then click *Save*.

In the future, you can just click on your newly saved preset. You are now ready to print!

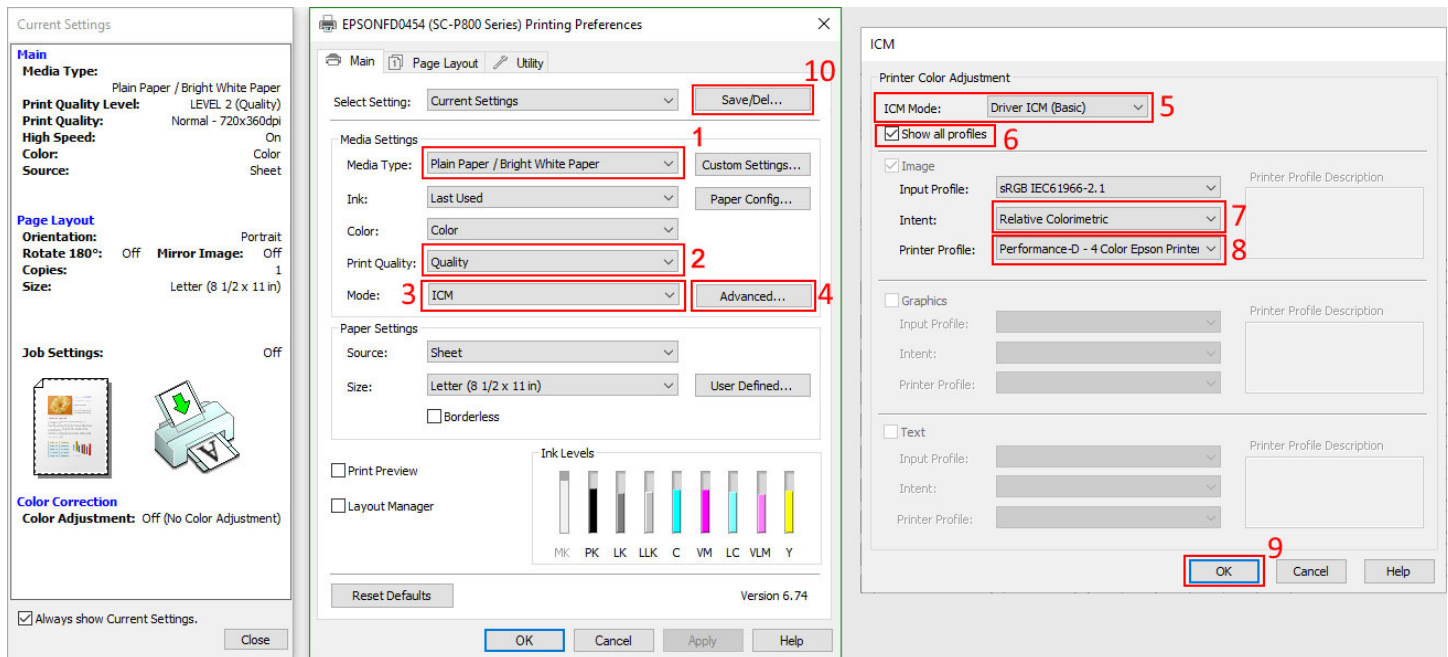
## Version 2



1. Select the *Advanced* tab.
2. Select the appropriate media type.  
(For sublimation, we recommend setting the paper type to *Plain Paper* and setting the quality to the highest setting. You will also usually want to print your images mirrored, so you should check the *Mirror Image* box on the next tab.)
3. Under *Color Management*, select *ICM*.
4. Ensure that the *ICM Mode* is set to *Driver ICM (Basic)*.
5. Tick the box labelled *Show all profiles*.
6. Select the color profile you installed earlier.
7. To avoid having to do all this on each print, we recommend saving a Preset. Press the *Save Settings...* button to configure a new preset.

In the future, you can just click on your newly saved preset. You are now ready to print!

## Version 3



1. Select the appropriate media type.  
(For sublimation, we recommend setting the paper type to *Plain Paper*. You will also usually want to print your images mirrored, so you should check the Mirror Image box on the next tab.)
2. Set *Print Quality* to *Quality*.
3. *Mode* should be set to *ICM*.
4. Click on the *Advanced...* button.
5. Ensure that the *ICM Mode* is set to *Driver ICM (Basic)*.
6. Tick the box labelled *Show all profiles*.
7. Set *Intent* to *Relative Colorimetric*.
8. Select the color profile you installed earlier.
9. Click *OK*.
10. To avoid having to do all this each time you print, we recommend saving a Preset. Press the *Save/Del...* button to configure a new preset.

In the future, you can just click on your newly saved preset. You are now ready to print!